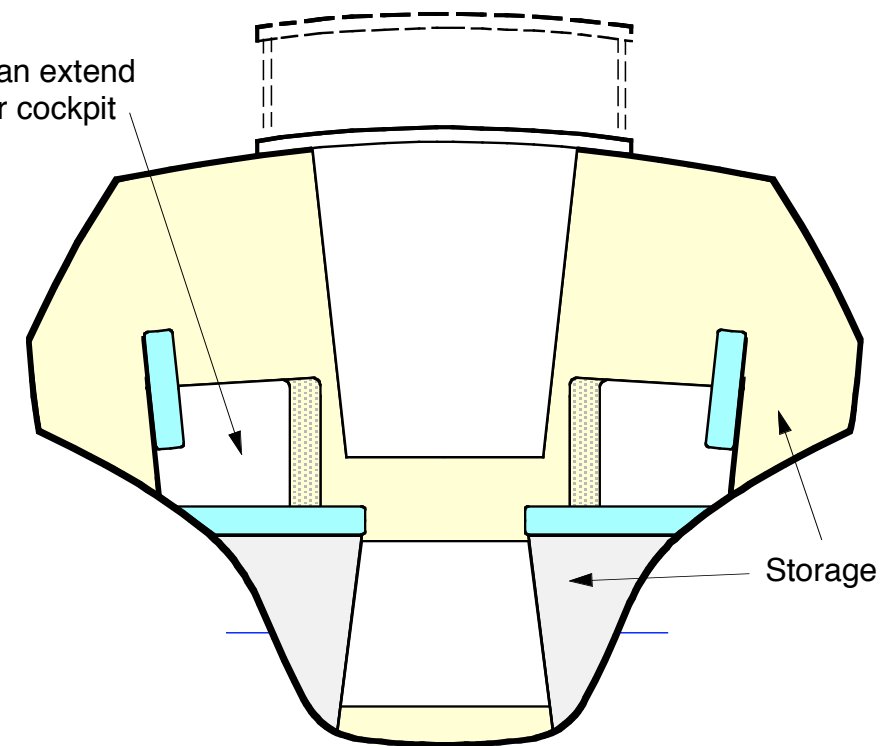
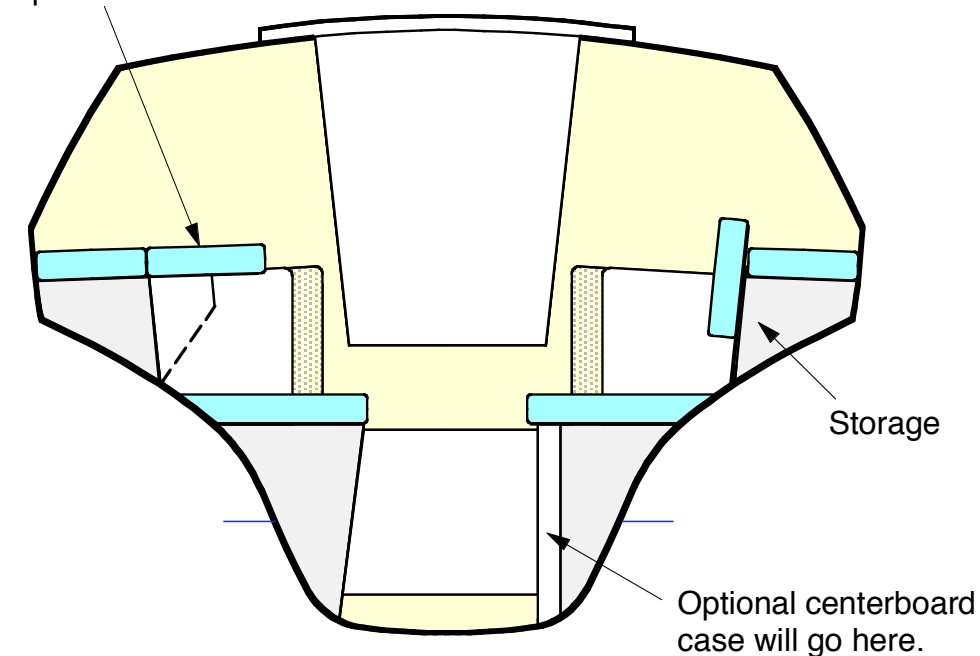


Settee berths can extend further aft under cockpit



INTERIOR SECTION
(Looking aft)

Optional wing berth is setup like this



INTERIOR SECTION
(With opt. c/board and wing berths)

THE F-22™ SPORT TRI INTERIOR

Scale 1 : 20 & 1 : 36

August, 2005

A Design By Farrier Marine, Inc.
P.O. Box 40675, Bellevue WA 98015, USA